



IP KVM Switch

Console Management, Anywhere, Anytime

IP KVM defines a new class of remote KVM access devices; it combines digital remote KVM access via IP networks with comprehensive and integrated system management. It captures, digitizes, and compresses video and transmits it with keyboard and mouse signals to and from a remote computer. Also it provides a non-intrusive solution for remote access and control. Remote access and control software runs on its embedded processors only but not on mission-critical servers, so that there is no interference with server operation or impact on network performance.

Key Features

- Manage servers around the world
- KVM access over IP, ISDN or analogous telephone line
- BIOS level access
- Virtual storage mapping
- SSL encryption
- No impact on server or network performance
- Automatically senses video resolution for best possible screen capture
- High-performance mouse tracking and synchronization
- Local mouse suppression (only when using SUN's Java Virtual Machine)

Package Contents

- IPKVM-100 Switch
- Quick start guide
- CD-ROM (installation and product manual)
- Power adapter
- Rack mount bracket
- Serial, KVM, Ethernet and USB cables



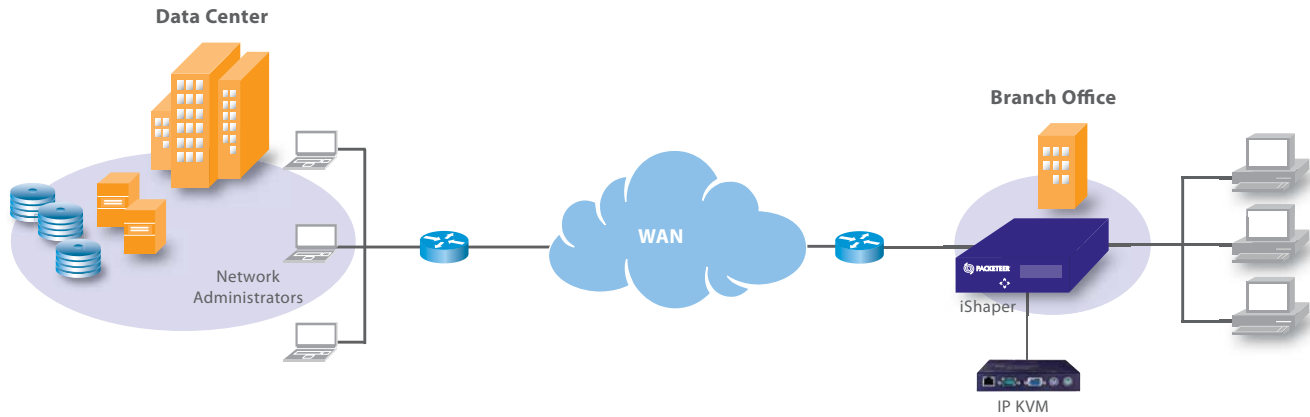
**Full control of you
iShaper™, iShared® or
PacketShaper® appliance
with remote access**

**Easy management
collaboration among
multiple IT team
members**

**Implement out-of-band
access on a permanent or
temporary basis without
any configuration
changes**

IP KVM Switch

Console Management, Anywhere, Anytime



Using the IP KVM makes it simple to remotely manage your iShaper or iShared appliance. And multiple users can concurrently log in to IP KVM.

Specifications	
	IPKVM-100
PC Port	1
Console Port	1
PC Port Connector (All Female Types)	PS/2 Keyboard Mini Din 6 pin PS/2 Mouse Mini Din 6 pin VGA HDDB 15 pin USB Type B receptacle
Console Port Connector (All Female Types)	PS/2 Keyboard Mini Din 6 pin PS/2 Mouse Mini Din 6 pin VGA HDDB 15pin
Remote Console Connector	RJ-45 8P8C
Serial Port (DB9 pin Male)	1
LAN port (RJ-45 8P8C)	1 x 10BASE-T Ethernet 1 x 100BASE-T Ethernet
Reset button	1
Keyboard Emulation	PS/2
Mouse Emulation	PS/2
VGA Resolution	Local: 1600X1200 Remote: 1280X1024
Power Adapter	DC 5V, 2.5A
Temperatures	Operating: 0 to 5°C (32 to 41°F) Storage: -20 to 60°C (-4 to 140°F) Humidity: 0 ~ 80%, non-condensing
Physical Specifications	Housing: Metal Dimensions (w x h x d): 156 x 27 x 139 mm/6.1 x 1.1 x 5.5 in Weight: 1700g/3.75lbs

www.packeteer.com

10201 N. De Anza Blvd
Cupertino CA USA 95014
T +1 408.873.4400 F +1 408.873.4410

